

**FARP1 Polyclonal Antibody**  
**Purified Rabbit Polyclonal Antibody (Pab)**  
**Catalog # AP55071****Specification**

---

**FARP1 Polyclonal Antibody - Product Information**

Application	WB, IHC-P, IHC-F, IF, ICC, E
Primary Accession	<a href="#">Q9Y4F1</a>
Reactivity	Rat, Pig, Dog, Bovine
Host	Rabbit
Clonality	Polyclonal
Calculated MW	118633

**FARP1 Polyclonal Antibody - Additional Information****Gene ID** 10160**Other Names**

FERM, ARHGEF and pleckstrin domain-containing protein 1, Chondrocyte-derived ezrin-like protein, FERM, RhoGEF and pleckstrin domain-containing protein 1, Pleckstrin homology domain-containing family C member 2, PH domain-containing family C member 2, FARP1, CDEP, PLEKHC2

**Dilution**

<span class = "dilution\_WB">WB~~1:1000</span><br \><span class = "dilution\_IHC-P">IHC-P~~N/A</span><br \><span class = "dilution\_IHC-F">IHC-F~~N/A</span><br \><span class = "dilution\_IF">IF~~1:50~200</span><br \><span class = "dilution\_ICC">ICC~~N/A</span><br \><span class = "dilution\_E">E~~N/A</span>

**Format**

0.01M TBS(pH7.4), 0.09% (W/V) sodium azide and 50% Glyce

**Storage**

Store at -20 °C for one year. Avoid repeated freeze/thaw cycles. When reconstituted in sterile pH 7.4 0.01M PBS or diluent of antibody the antibody is stable for at least two weeks at 2-4 °C.

**FARP1 Polyclonal Antibody - Protein Information****Name** FARP1**Synonyms** CDEP, PLEKHC2**Function**

Functions as a guanine nucleotide exchange factor for RAC1. May play a role in semaphorin signaling. Plays a role in the assembly and disassembly of dendritic filopodia, the formation of dendritic spines, regulation of dendrite length and ultimately the formation of synapses (By similarity).

### Cellular Location

Cell membrane; Peripheral membrane protein; Cytoplasmic side. Synapse. Synapse, synaptosome. Cytoplasm, cytosol. Cell projection, filopodium. Cell projection, dendrite. Cell projection, dendritic spine. Note=Recruited to the cell membrane via interaction with CADM1.

### Tissue Location

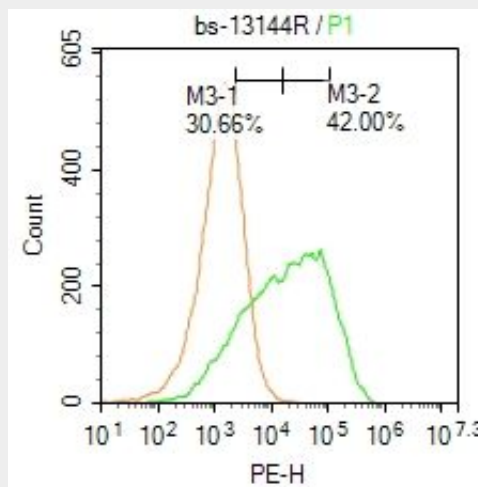
Detected in cAMP-treated chondrocytes, but not in untreated chondrocytes. Detected in fetal brain, heart and spleen, and in adult testis, kidney and lung.

### FARP1 Polyclonal Antibody - Protocols

Provided below are standard protocols that you may find useful for product applications.

- [Western Blot](#)
- [Blocking Peptides](#)
- [Dot Blot](#)
- [Immunohistochemistry](#)
- [Immunofluorescence](#)
- [Immunoprecipitation](#)
- [Flow Cytometry](#)
- [Cell Culture](#)

### FARP1 Polyclonal Antibody - Images



Blank control: HeLa.

Primary Antibody (green line): Rabbit Anti-FARP1 antibody (bs-13144R)

Dilution: 1 µg /10<sup>6</sup> cells;

Isotype Control Antibody (orange line): Rabbit IgG .

Secondary Antibody : Goat anti-rabbit IgG-PE

Dilution: 3 µg /test.

Protocol

The cells were fixed with 4% PFA (10min at room temperature) and then permeabilized with 20% PBST for 20 min at room temperature. The cells were then incubated in 5% BSA to block non-specific protein-protein interactions for 30 min at room temperature. Cells stained with Primary Antibody for 30 min at room temperature. The secondary antibody used for 40 min at room temperature. Acquisition of 20,000 events was performed.